

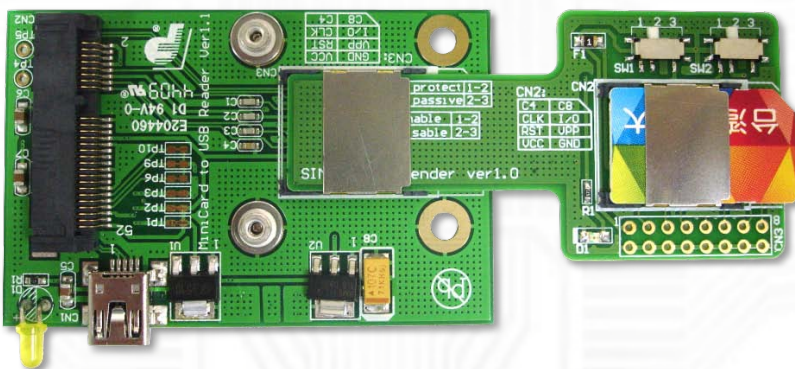
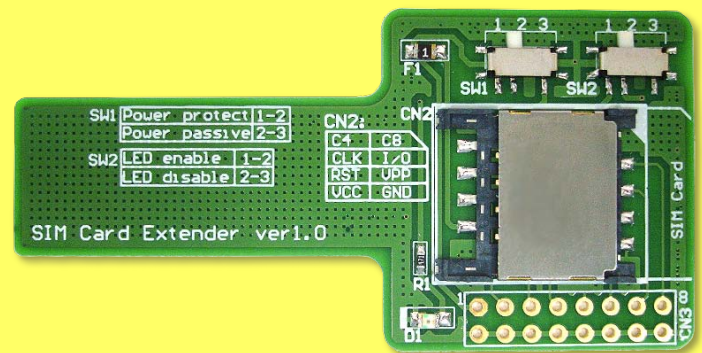
S4EX Extender ver1.0

SIM-Card Extender

The S4EX SIM Extender is a test and signal detection tool for SIM card. It allows a SIM card to be extended from the host slot for full access to the all of signal pins.

It's especially designed to save valuable labor and time in the production environment. The S4EX is designed to minimize the signal degradation effects of the extender by proven design techniques. Separate Vcc and ground planes provide a low inductance path to the host's power supply.

The SIM (Subscriber Identity Module) extender has the function of over-current protection with PTC fuse. A clearly marked jumper header allows probing of all of signal pins. It's also a powerful tool for engineers, or use for factory test protection.



Key Features

- Test connector for all of signal and power pins.
- Any signal can be isolated with test pin.
- Power and ground can be isolated for power measurements.
- LED indicates power status.
- Adds LED enable switch and fuse enable switches.
- Vcc bypassed for clean power.
- Supports both Smartcards and SIM cards.
- High quality connectors for long service life.
- Over-current protection with PTC fuse
- Supports Smartcard Vcc 1.8V, 3V, 5V

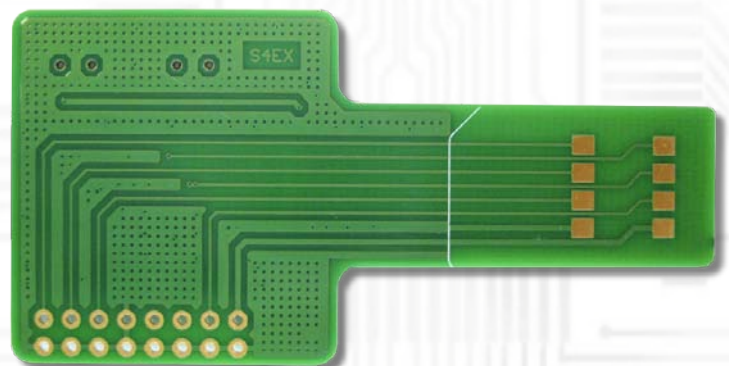
Product Specifications

Support Card Type:

- Mini-SIM ISO/IEC 7810:2003, ID-000 25mmx15mmx0.76mm

Dimension:

Width : 32.51mm Length : 65.03mm PCB Thickness 0.8mm



As a New manufacturer of quality computer connectivity products since 2009/Mar, BPLUS technology brings to market a broad range of upgrade products. These products bridge the connection between Desktop/Notebook systems and external peripherals.



Adress:5F,NO.63,ZHOU-TZYY
ST.,NEI-HU,TAIPEI,TAIWAN,R.O.C
Tel:886-2-77210550
Fax:886-2-87974200
Email:sales@bplus.com.tw
Web http://www.bplus.com.tw/